

**LED LIGHTING**



MADE  
FOR  
YOUR  
HOME

**AZERO®**





# INDEX

## LINEAR

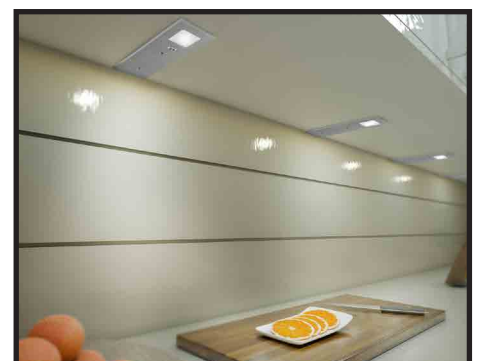
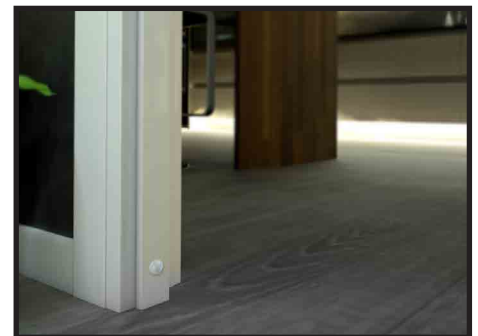
- LINEARS
- LED PROFILES

## SPOTLIGHT

- SIMPLE
- SYSTEMS

## ACCESSORIES

- SWITCHES
- DIMMERS
- SENSORS
- OTHERS
- POWER TRANSFORMERS



# Tucán

LED Upper bar touch

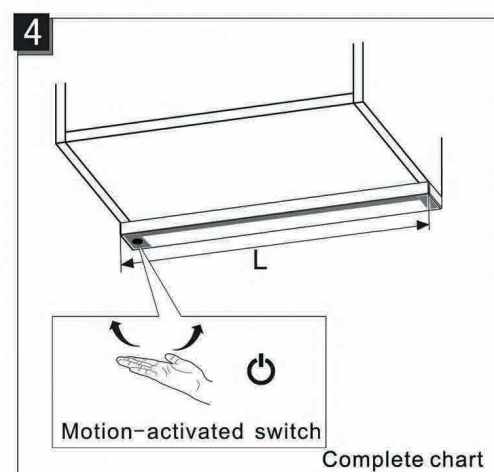
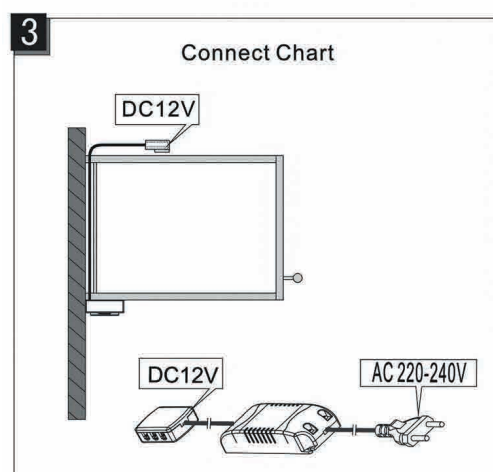
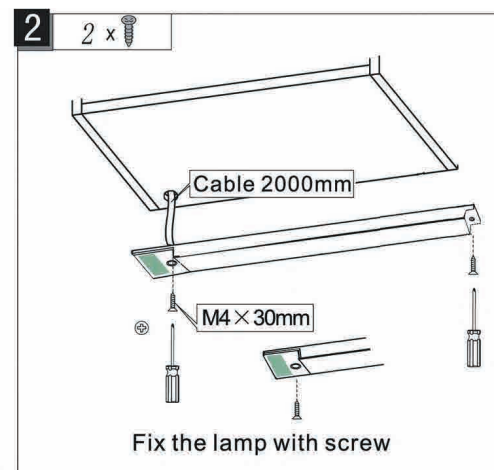
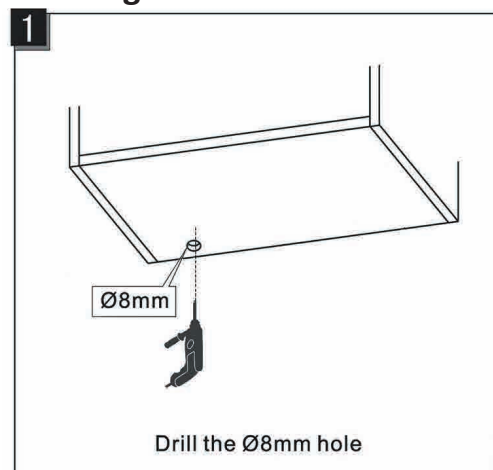




Reference	COLOUR	WATT	LEDs/M	VOLT	Large x Width x High	LUMENS
AZ65-450	6000	5.6	200	12	450x 45x10mm	670
AZ65-600	6000	7.8	200	12	600x45x10mm	950
AZ65-900	6000	12.2	200	12	900x45x10mm	1500
AZ65-1200	6000	16.7	200	12	1200x45x10mm	2000
AZ65-1500	6000	21.10	200	12	1500x45x10mm	2530

LED bar surface without dots. Great Illumination LED. ON/OFF hand movement sensor. To illuminate long countertop with just one spotlight.  
Measures cut available.

### Drawing



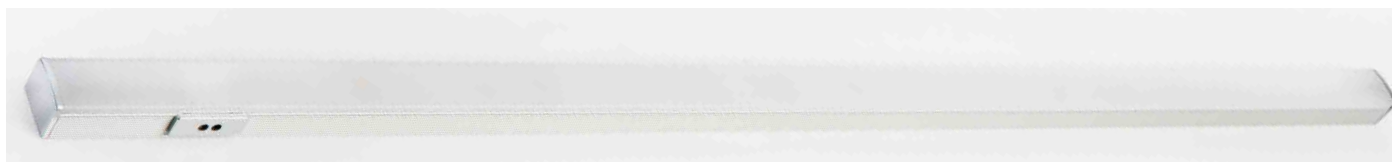
# Siner

LED bar for drawer with sensor

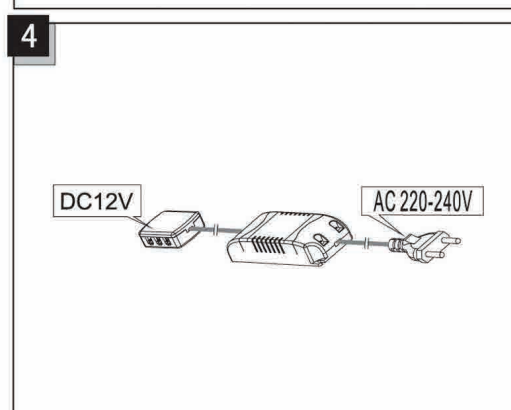
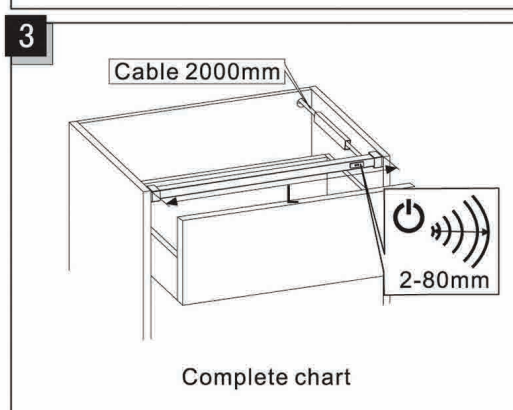
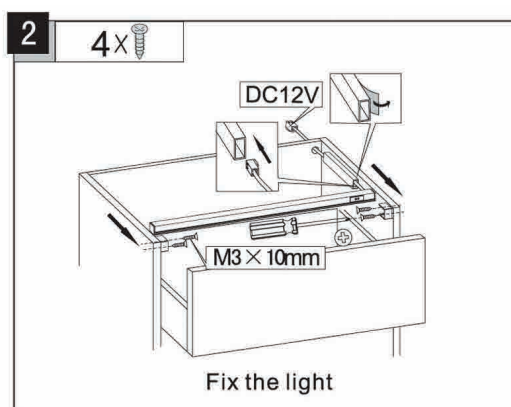
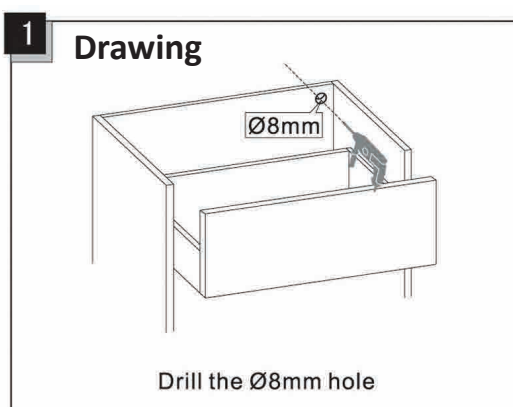
LED bar surface without dots. Inside LED for high or low cabinets and drawers. High illumination. Opening drawer or cabinet sensor ON and OFF when it closes integrated. Measures cut available.







Reference	COLOUR	WATT	LEDs/M	VOLT	Large x Width x High	LUMEN
AZ66-400	6000	5.2	240	12	395x18x13mm	310
AZ66-550	6000	7.4	240	12	545x18x13mm	925
AZ66-850	6000	12.4	240	12	849.5x18x13mm	1550
AZ66-1150	6000	17.2	240	12	1145x18x13mm	2150



- Detection area: 2-80mm.
- IR sensor receptor will have interferences for an exposition to high light.
- The reflective surface can not be black colour, transparent or translucent.

# Garmo

## LED Panel

Surface panel high light intensity when you need a lot of light on a specific area.  
Only 8mm height.



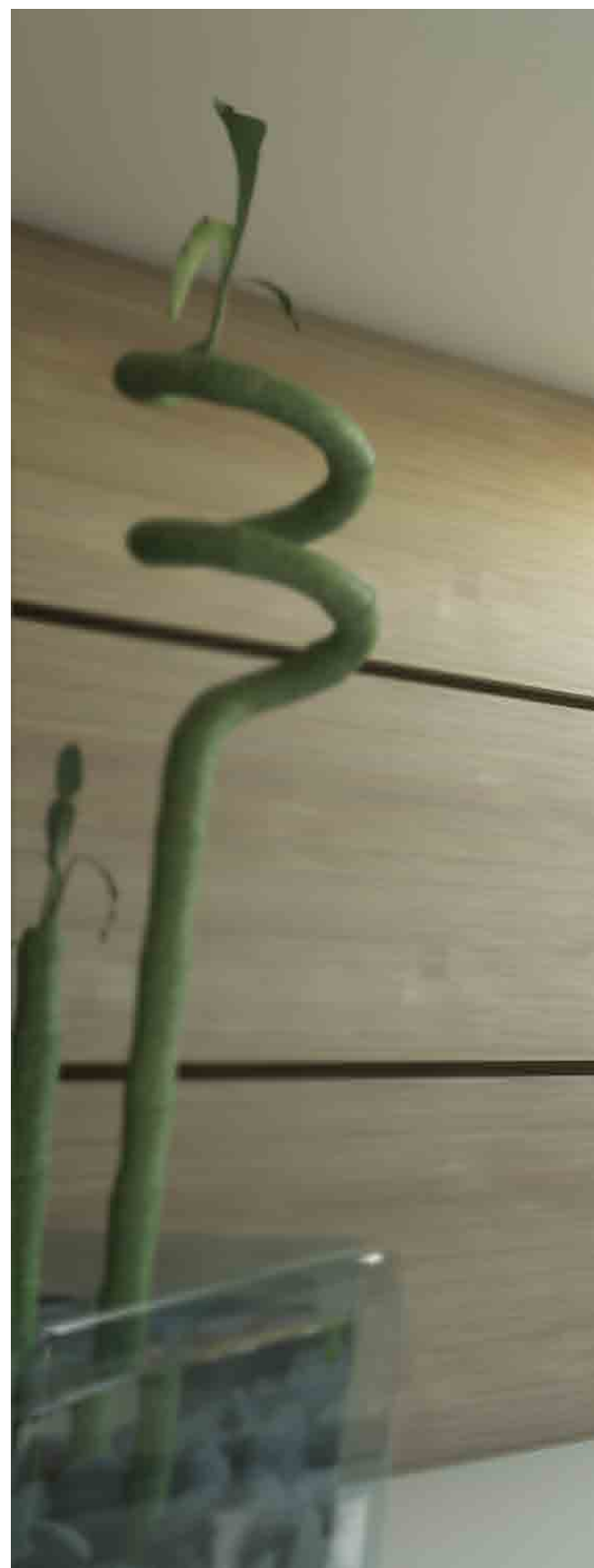
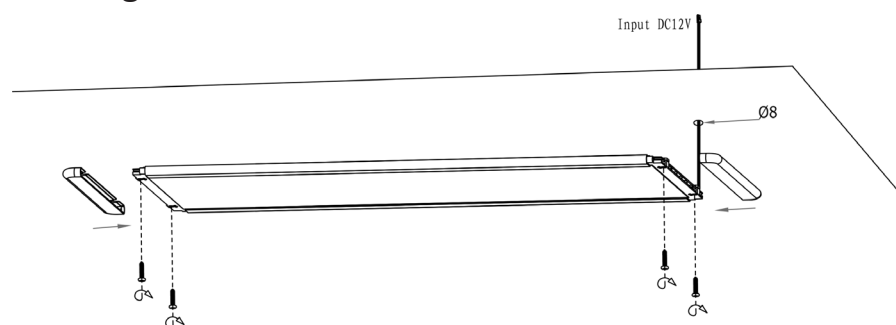
### Large x Width x High

450x200x8mm

600x200x8mm

- Material: Aluminium / PC
- 3 meters of cable included. Male plug.
- 2 diferents measures.
- Surface mounting.
- Uniform light.

## Drawing







Reference	Length	COLOUR	WATT	LEDS	VOLT	LUMENS
<b>AZ70-450</b>	450 mm	6500	12	78	12	900-1000
<b>AZ70-600</b>	600 mm	6500	15	102	12	1100-1200

# LED Profile

Profile with led strip. Make sure that you have a continuous light without dots.



## Components

STRIP

PROFILE

CONNECTING

TRANSFORMER

## LED strips profiles



Reference	Installation Type
<b>467HP</b>	Recessed 12mm - 2 meters
<b>468HP</b>	Surface 18mm - 2 meters
<b>469HP</b>	Recessed 18mm - 2 meters

Surface or recessed installation.  
Includes difusser and final covers.

## Cable and conections for LED strips

With these accessories you can adjust easily the led strip according to each requirement.



**Ref. 415 - 8HP (8 mm)**

**Ref. 415 - 10HP (10 mm)**

50 cm connection cable clip for the strip to the transformer.

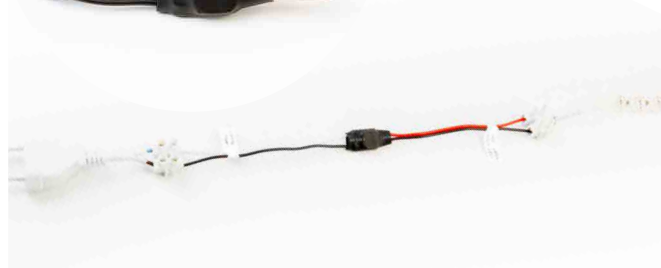
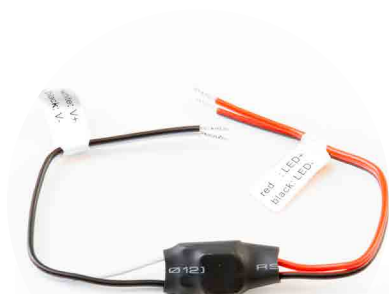
**Ref. 419HP**

Movement sensor for recessed. To conect to 415hp cable and then to the transformer rack.



**Ref. 408HP**

Tactile switch for 8mm profiles led.



**AZ935 LED Driver**

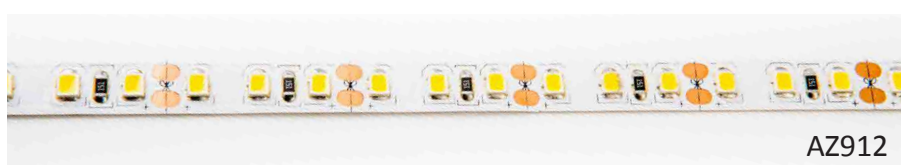
Adapter to transform to current power of LED strip without transformer.

VOLT	OUTPUT	WATT	Dimensions
12-24	700mA	18	12.5x12.5x5

**LED STRIPS**


LED strip 5 meters large.  
Adhesives and easy installation.  
Male conector at the beginning and the end  
of strip.

Reference	Width MM	IP	COLOUR	VOLT	WATT	LED/M	LUMEN/ MTS	
AZ910	8	20	4000	12	5.5	60	780	12V IP20
AZ911	8	20	5000	12	5.5	60	800	
AZ912	8	20	4000	12	10	120	1480	
AZ913	8	20	5000	12	10	120	1560	
AZ914	8	20	4000	12	12	204	1500	
AZ915	8	20	5000	12	12	204	1600	
AZ916	8	65	4000	12	5.5	60	780	12V IP65
AZ917	8	65	5000	12	5.5	60	800	
AZ918	8	65	4000	12	10	120	1480	
AZ919	8	65	5000	12	10	120	1560	
AZ920	8	20	4000	24	6.5	60	780	24VIP20
AZ921	8	20	5000	24	6.5	60	800	
AZ922	8	20	4000	24	19	120	1480	
AZ923	8	20	5000	24	19	120	1560	
AZ924	8	20	4000	24	17	204	1500	
AZ925	8	20	5000	24	17	204	1600	
AZ926	8	65	4000	24	6.5	60	780	24VIP65
AZ927	8	65	5000	24	6.5	60	800	
AZ928	8	65	4000	24	19	120	1480	
AZ929	8	65	5000	24	19	120	1560	



AZ912



AZ916



AZ924



AZ916



AZ925



AZ915



AZ911

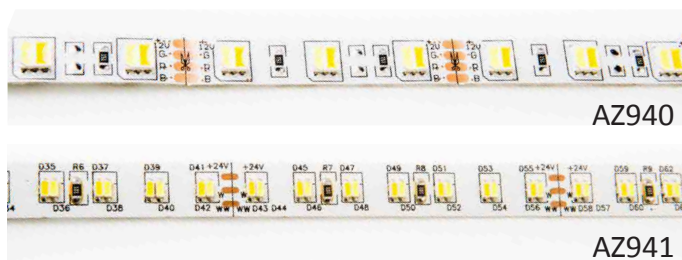


## BILED strip



LED strip 5 meters con enchufe macho en inicio y fin con LED warm 3000 y cold 6500, regula el cambio de un COLOUR a otro gradualmente con mando a distancia y dimmer, así como la intensidad de luz. Este invento permite ahorro en rollos led al unificar cold y warm todo en un rollo led.

Reference	IP	LUMENS	VOLT	LED/M	W/MTS
<b>AZ931</b>	20	3000-6500	12	120	10
<b>AZ932</b>	20	3000-6500	24	204	16



To be necessary:  
AZ9301 y AZ9302. DIMMER and controller.



## Atalaya

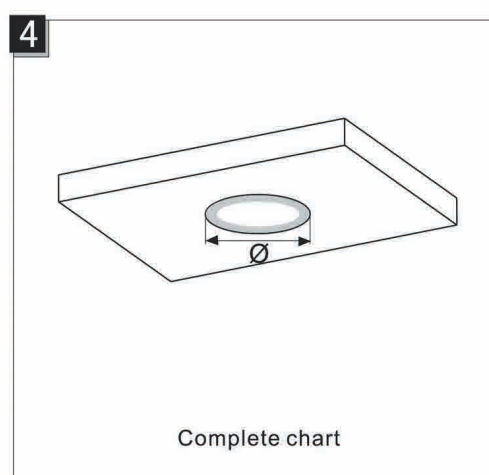
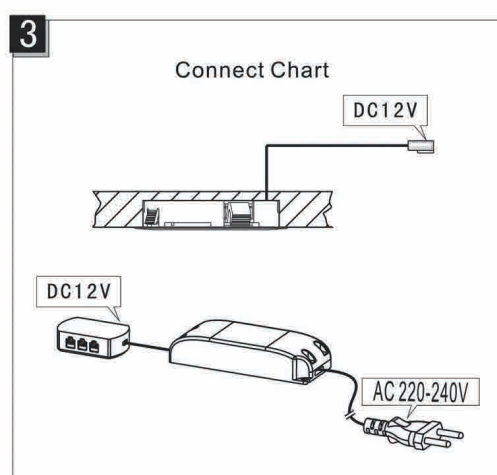
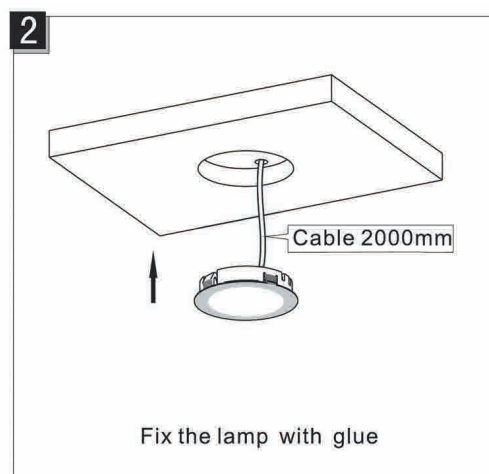
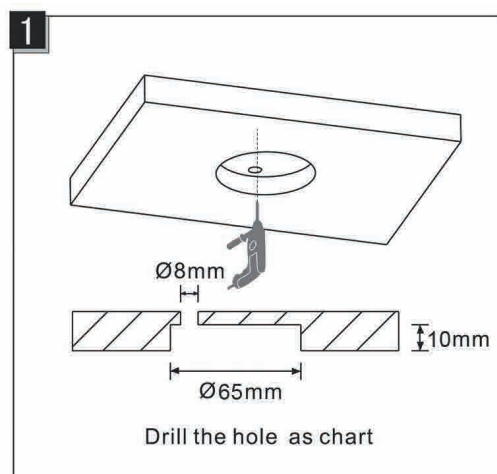
Spotlight LED White - Matt

Spotlight LED to embed. Aluminium material. High luminous efficacy



Reference	Measures	COLOUR	WATT	VOLT	LUMENS
AZ62	69x10.5mm	6000	2.8	12	330

### Drawing



# Zelda

Spotlight LED Recessed. ON/OFF touching the spotlight.

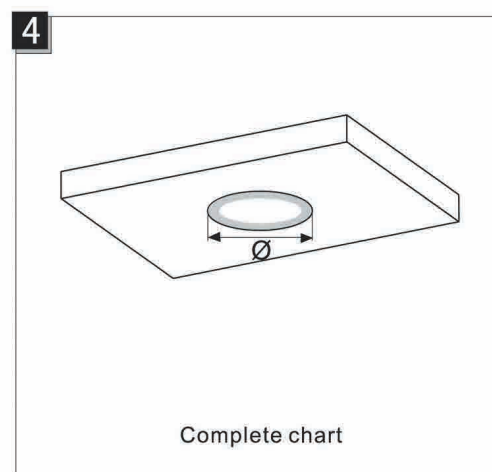
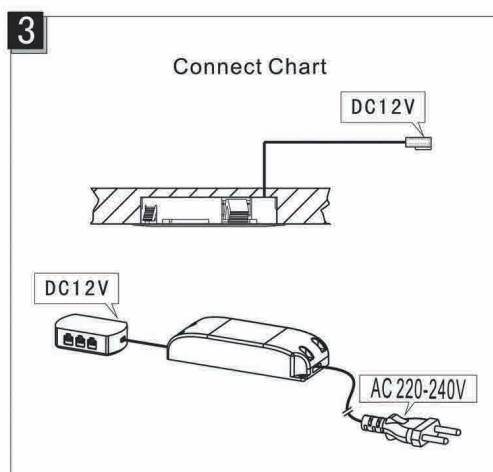
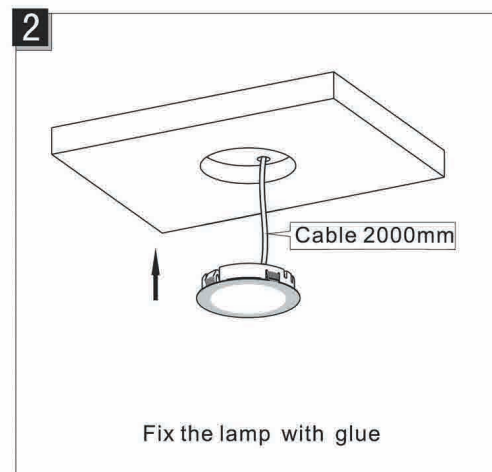
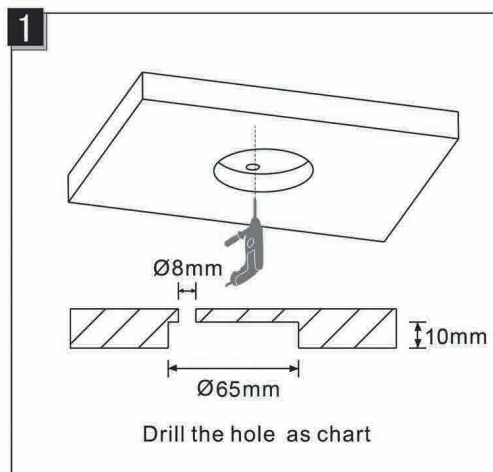




Reference	Measures	COLOUR	WATT	VOLT	LUMENS
<b>AZ450</b>	68x7x10MM	6000	2.8	12	250

Indicated for young people bedrooms or any other surface. Saving on sensor ON/OFF.

### Drawing



# Gaia

Spotlight LED White

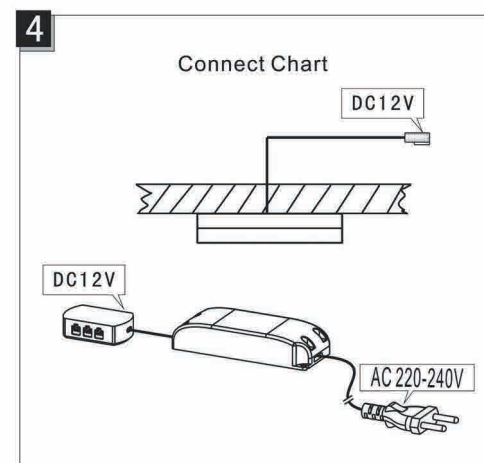
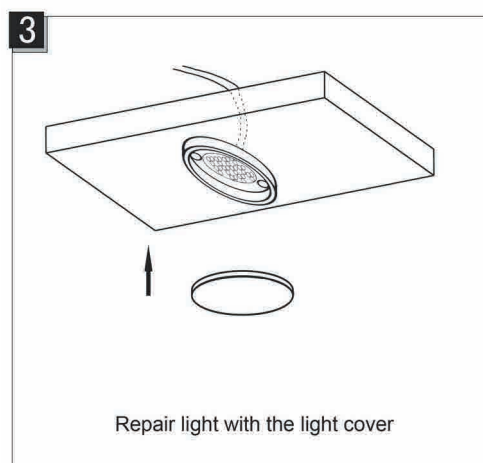
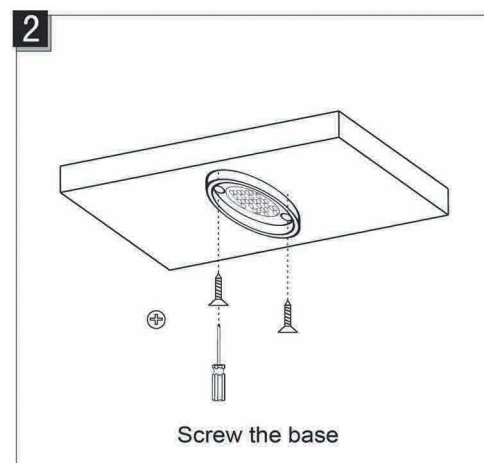
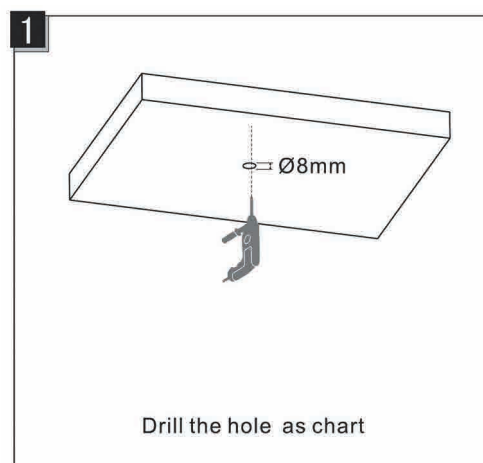




Reference	Measures	COLOUR	WATT	VOLT	LUMENS
<b>AZ63</b>	63x12mm	6000	2.7	12	320

Surface spotlight. High luminous efficacy. LED without dots.  
Exclusive and elegant design. 12mm height.

### Drawing





# Colmena

Spotlight LED white - Cristal



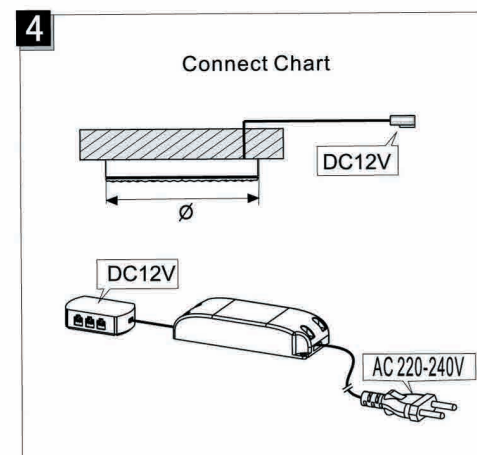
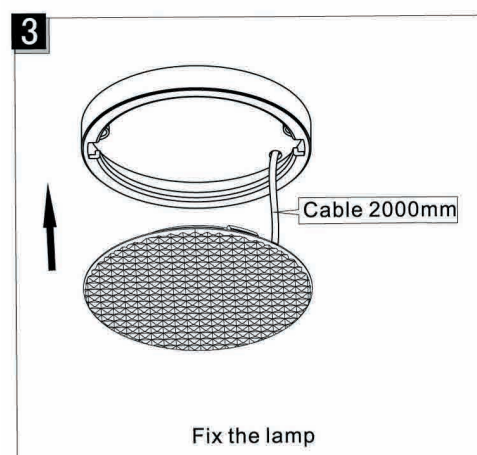
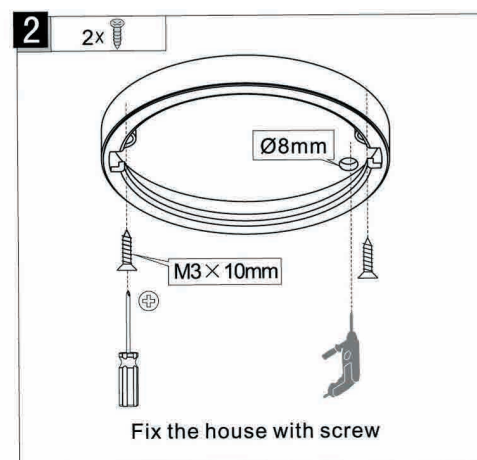
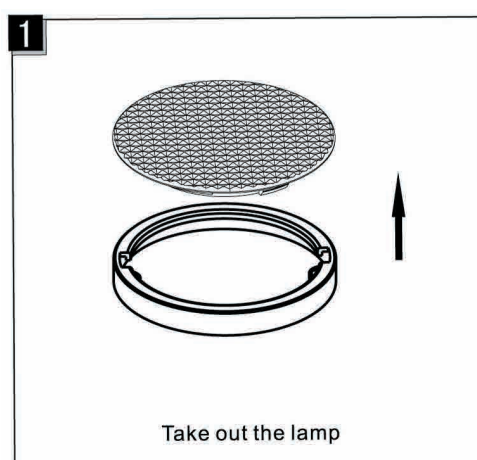




Reference	Measures	COLOUR	WATT	VOLT	LUMENS
AZ64	75x11mm	6000	1.8	12	300

Surface spotlight. High luminous efficacy. LED without dots.  
Exclusive and elegant design. 11mm height.

### Drawing



# Kobe

Spotlight LED Cabinet

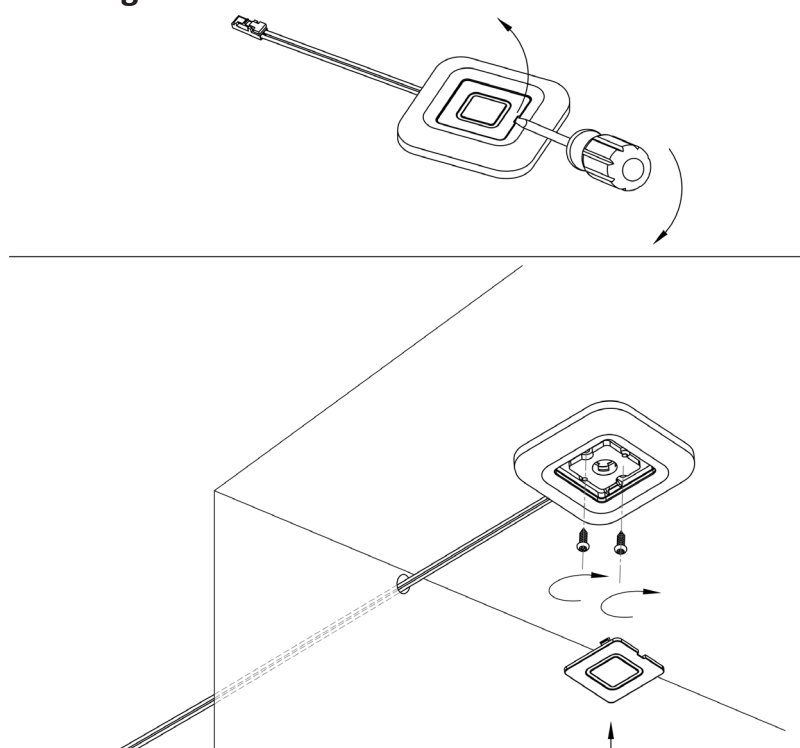




Reference	Measures	COLOUR	WATT	LUMENS	VOLT	LEDs
<b>AZ69</b>	60x9mm	6500	2.5	280	12	28

Surface Spotlight. High luminous efficacy. LED without dots. Exclusive and elegant design. 9mm height.

#### Drawing



# Muga

Spotlight LED current electricity. Surface.



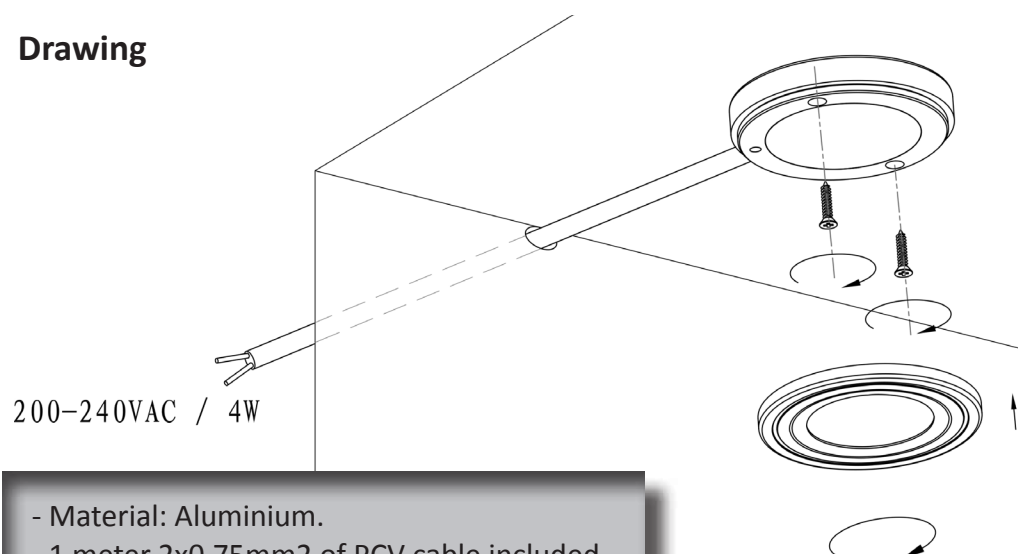
### Spotlight LED Surface mounting.



Reference	Measures	COLOUR	WATT	LUMENS	VAC	LEDS	VOLT
<b>AZ74</b>	70x13.5mm	6000	4	350	200-240	1	12

Spotlight LED Surface. LED COB only one dot high luminous efficacy.  
Direct plug to current power integrated. Transformer not required.  
For instalations were the minimum space does not allow to instal the transformer.

### Drawing



- Material: Aluminium.
- 1 meter 2x0.75mm<sup>2</sup> of PCV cable included.
- Direct plug to current power.

# Muga

Spotlight LED current electricity. Recessed.





## Spotlight LED Recessed mounting.

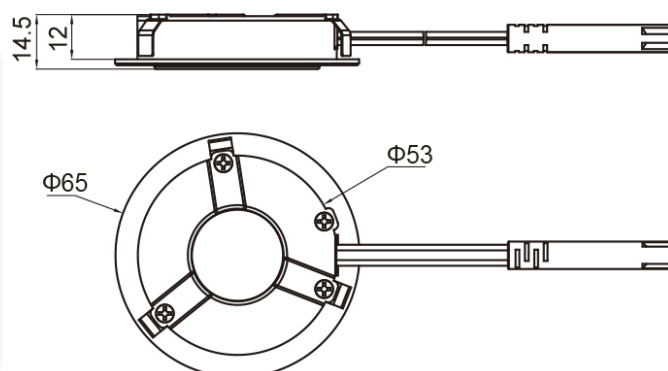


- Material: Aluminium.
- 1 meter 2x0.75mm<sup>2</sup> of PCV cable included.
- Direct plug to current power.

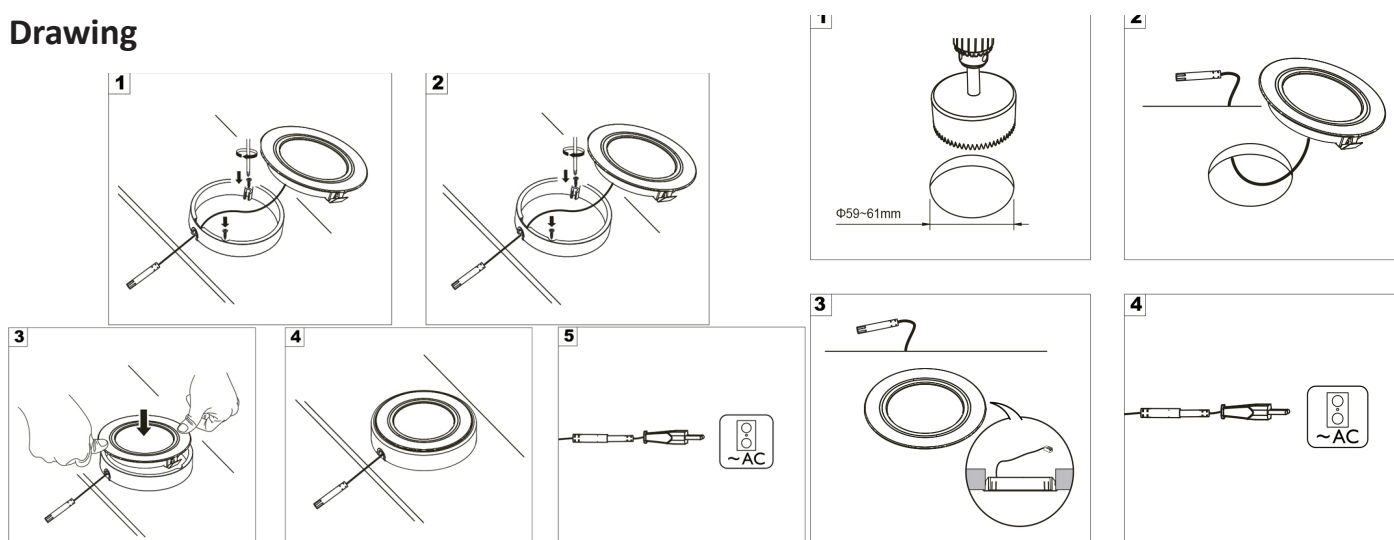
Reference	Measures	COLOUR	WATT	VOLT	Hole dimm.	LUMEN
AZ741	60.5x13mm	5000	3	220-240	59-61mm	360

### Dimmensions specification:

Spotlight LED Surface. LED COB only one dot high luminous efficacy.  
Direct plug to current power integrated.  
Transformer not required.  
For instalations were the minimum space does not allow to instal the transformer.



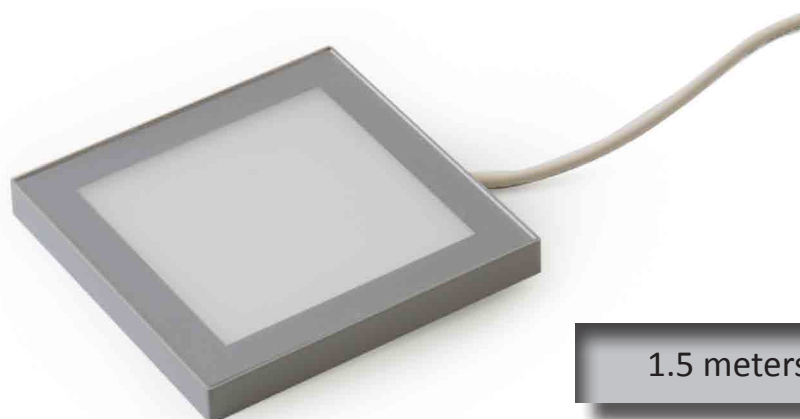
### Drawing



# Cadier



### Cadier - Spotlight LED Surface. Square.

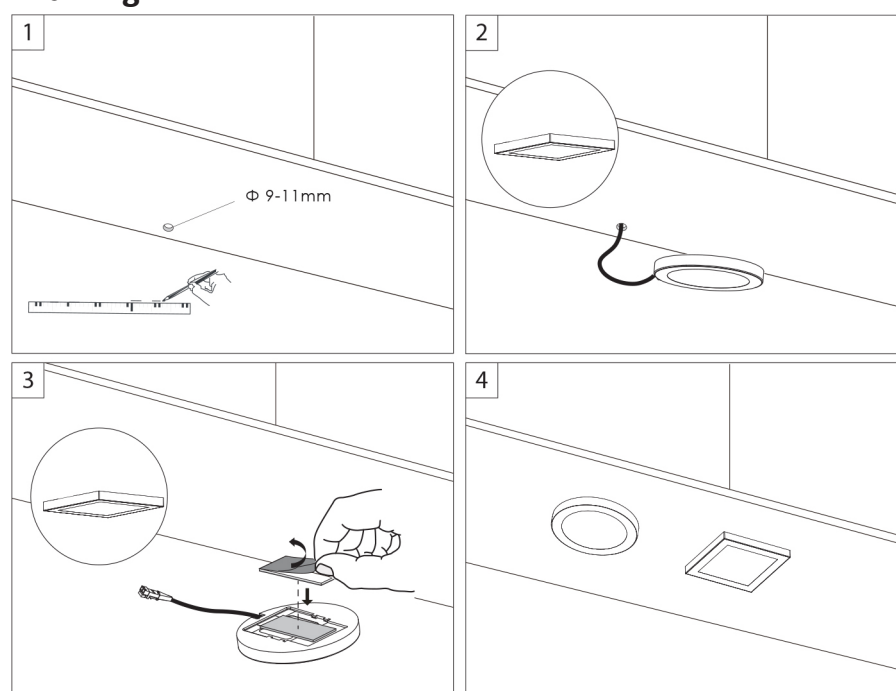


1.5 meters of cable included.

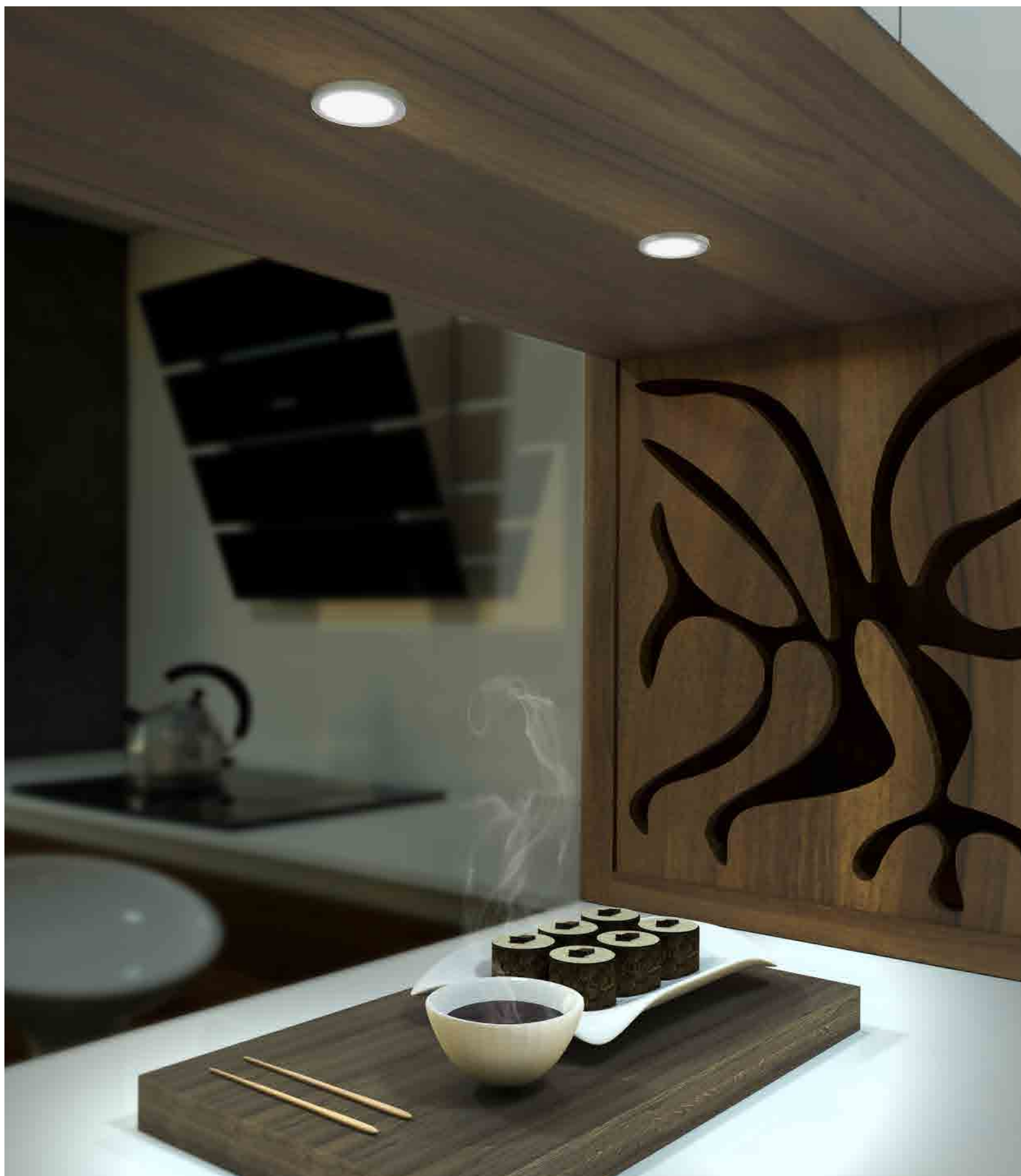
Reference	Measures	COLOUR	WATT	VCD	LEDS	Dim. Agujero	LUMEN
<b>AZ451</b>	65x65X7mm	5000	2	12	7	9-11mm	320

Spotlight surface LED without LED dots. Exclusive and elegant design ultra slim 7 mm. Ambient soft light.

### Drawing



# Olot



## Olot - Spotlight LED Surface. Rounded.

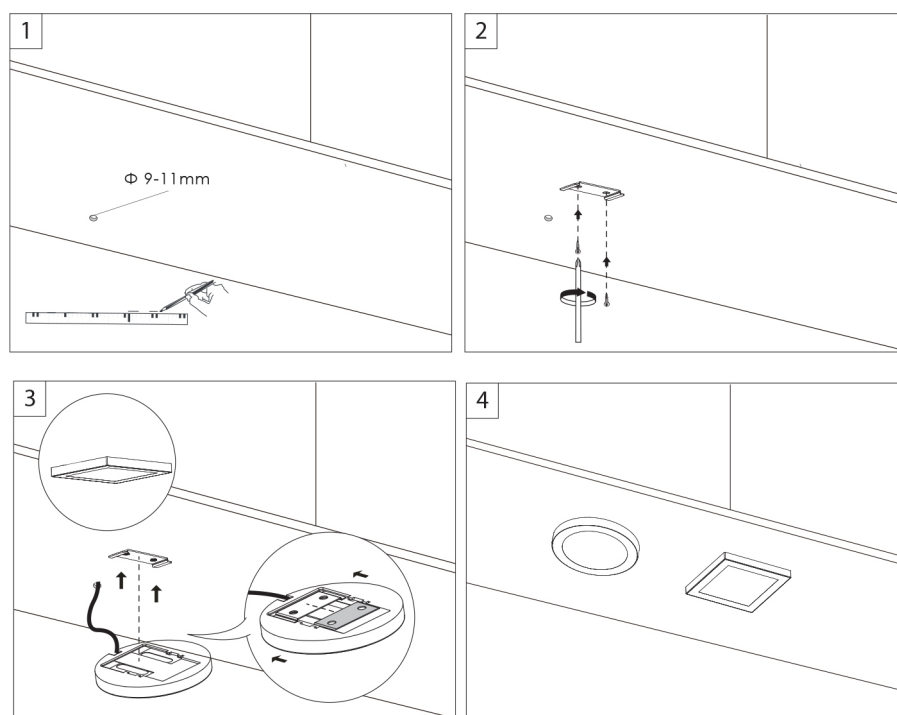


1.5 meters of cable included.

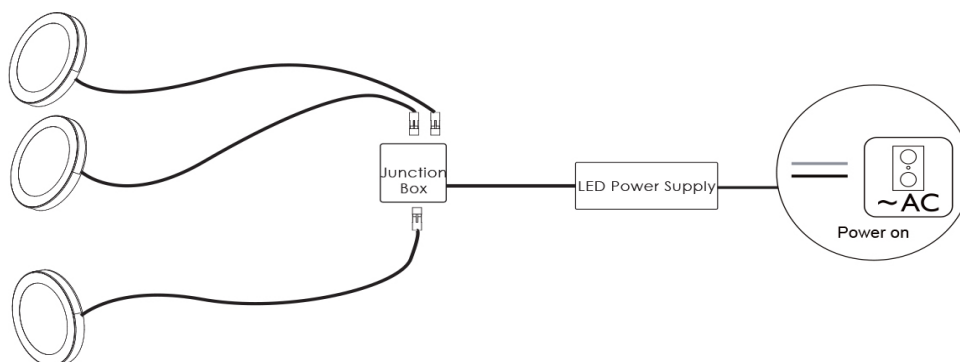
Reference	Measures	COLOUR	WATT	VCD	LEDS	Hole Dimm.	LUMEN
AZ452	65x7mm	5000	2	12	7	9-11mm	300

Spotlight surface LED without LED dots. Exclusive and elegant design ultra slim 7 mm. Ambient soft light.

### Drawing



### Multiple connexion drawing





# Veleta

Spotlight BILED Colour temperature adjustment Cold - Warm

Cold White



Warm White



Controller Cold- Warm and Brightness



## LED system with light dimmer adjustment and cold - warm adjustment.



Recessed spotlight BILED. Led 3000 warm - 6000 cold on Spotlight. With controller and DIMMER for light change to cold - warm and light intensity. Indicated for living rooms were change the light tone without change the installation.

### Spotlight LED colour temperature adjustment Cold - Warm

Reference	Measures	W	Rated Input	COLOUR	LUMEN
<b>AZ930</b>	65x12.8mm	3	24VDC	3000-6000	300

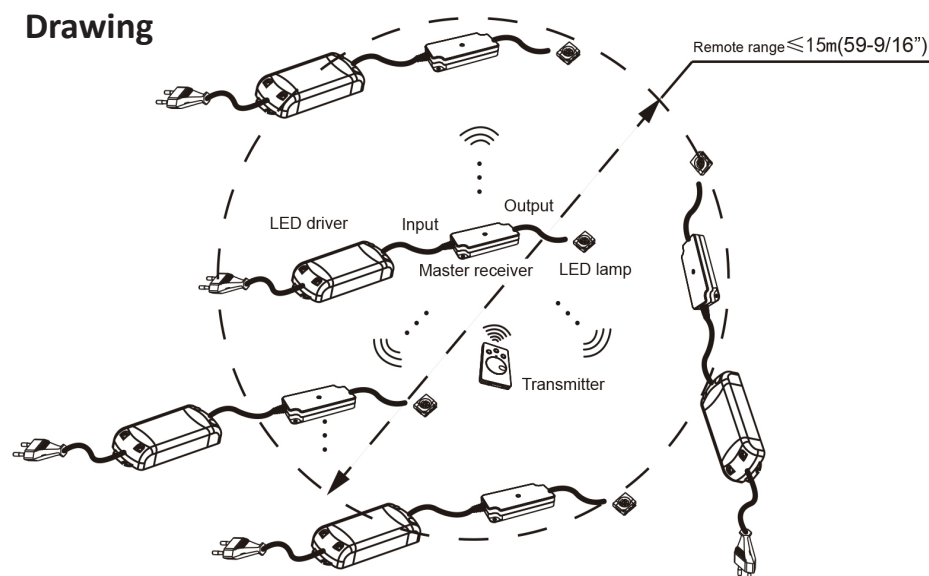
### Dimmer for AZ930

Reference	Measures	DC	12VCD	24VDC
<b>AZ9302</b>	44x96x16mm	12V O 24V	30W	60W

### Controller for AZ930

Reference	Measures	Frequency	Range	Power
<b>AZ9301</b>	50x86x12mm	2.4GHz	15m	CR2032 (3V)

### Drawing



# Yuma

LED set with adjustable movement sensor.



Spotlight with LED COB and one LED dot. High luminous. Coordinated system to illuminate at the same time all the spotlights with incorporated movement sensor on main spotlight who swiches on the rest of the spotlights and intensity regulation.  
Ultra slim design 5mm.

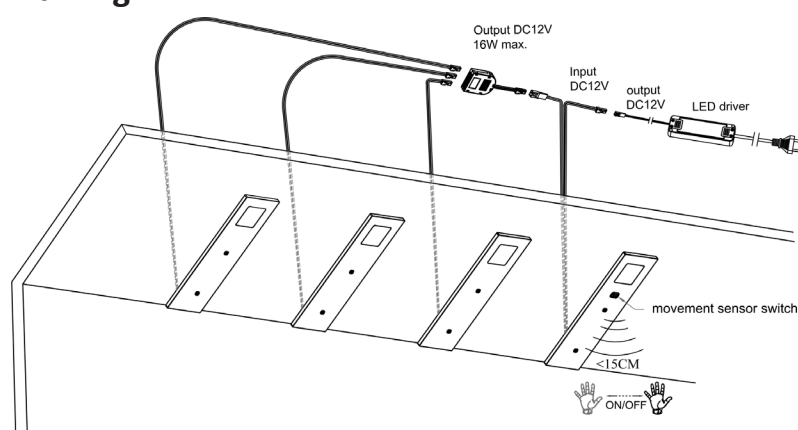


Transformer Included. 12V 12W and distributor.

Reference	COLOUR	WATT	LUMEN	VOLT	Measures	Units
<b>AZ67-2</b>	6000- 6500	3	300	12	190x60x5mm	2: 1 normal and 1 main
<b>AZ67-3</b>	6000- 6500	3	300	12	190x60x5mm	3: 2 normal and 1 main
<b>AZ67-4</b>	6000- 6500	3	300	12	190x60x5mm	4: 3 normal and 1 main

When the target object is in the detecting range for a short time within 0.5s, the lamp switches on (off).  
When the target object is in the detecting range for a long time more than 0.5s, the lamp is dimming and will stop dimming at the highest or lowest brightness or when the target object move away.

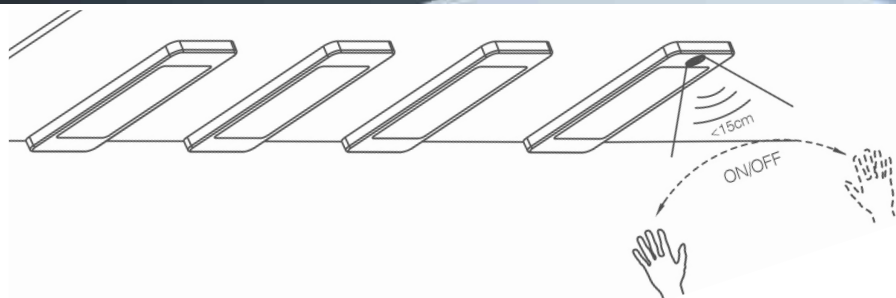
### Drawing



- Material: Aluminum.
- Spotlights: - Input 1.5m male connection cable.
- Output: 1.5m female connection cable.
- Transformer: - Input 1.5m 2x0.75mm<sup>2</sup> cable EU plug.
- Output: 1m female connection cable.
- With distributor of 3 and 1m male connection cable.

# Bielsa

Mini panel LED with movement sensor integrated.



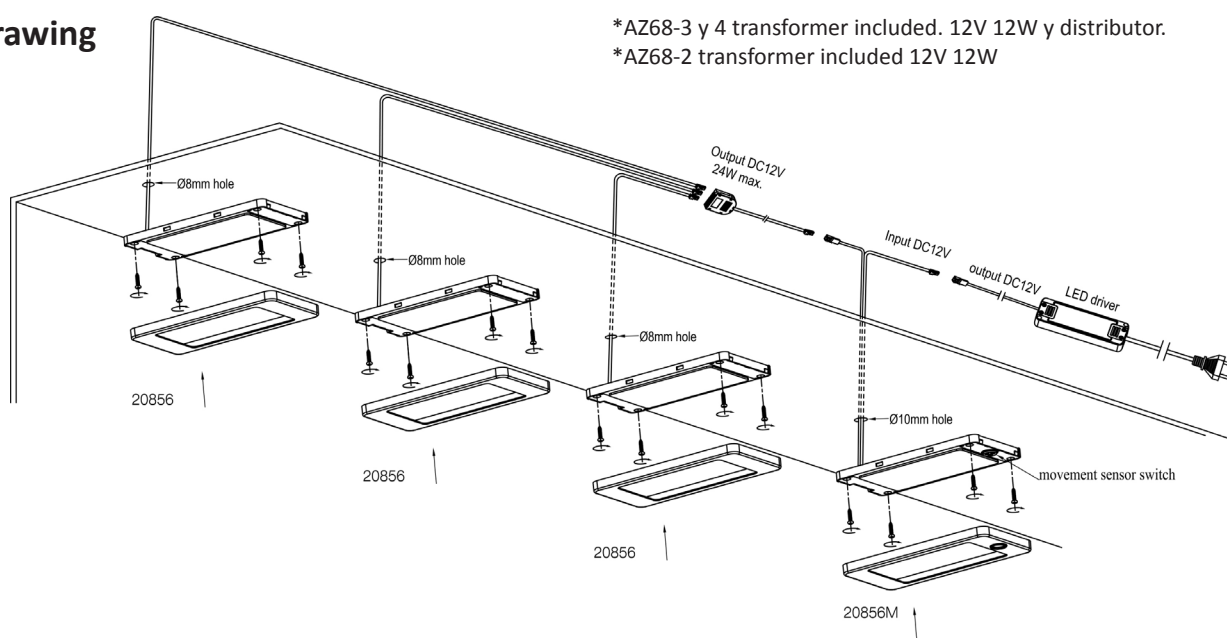
When the target object is in the detecting range one time, the lamp switches on (off). When the target object is in the detecting range second time, the lamp will be switched off (on)

Spotlight with LED COB one single LED dot. High luminous. Coordinated system to illuminate at the same time all the spotlights with incorporated movement sensor on main spotlight who switches on the rest of the spotlights



Reference	Measures	COLOUR	WATT	LUMENS	VOLT	LEDS	Units
AZ68-B	160x80x10mm	6500	3	250	12	16	1 Normal
AZ68-1	160x80x10mm	6500	3	250	12	16	1 Main
AZ68-2	160x80x10mm	6500	3	250	12	16	1 Normal 1 Main
AZ68-3	160x80x10mm	6500	3	250	12	16	2 Normal 1 Main
AZ68-4	160x80x10mm	6500	3	250	12	16	3 Normal 1 Main

### Drawing



- Material: Aluminum/PC
- Spotlights: - Input 1.5m male connection cable.
- Output: 1.5m female connection cable.
- Transformer: - Input 1.5m 2x0.75mm<sup>2</sup> cable EU plug.
- Output: 1m female connection cable.
- With distributor of 3 with 1m male connection cable.



# Eiguer

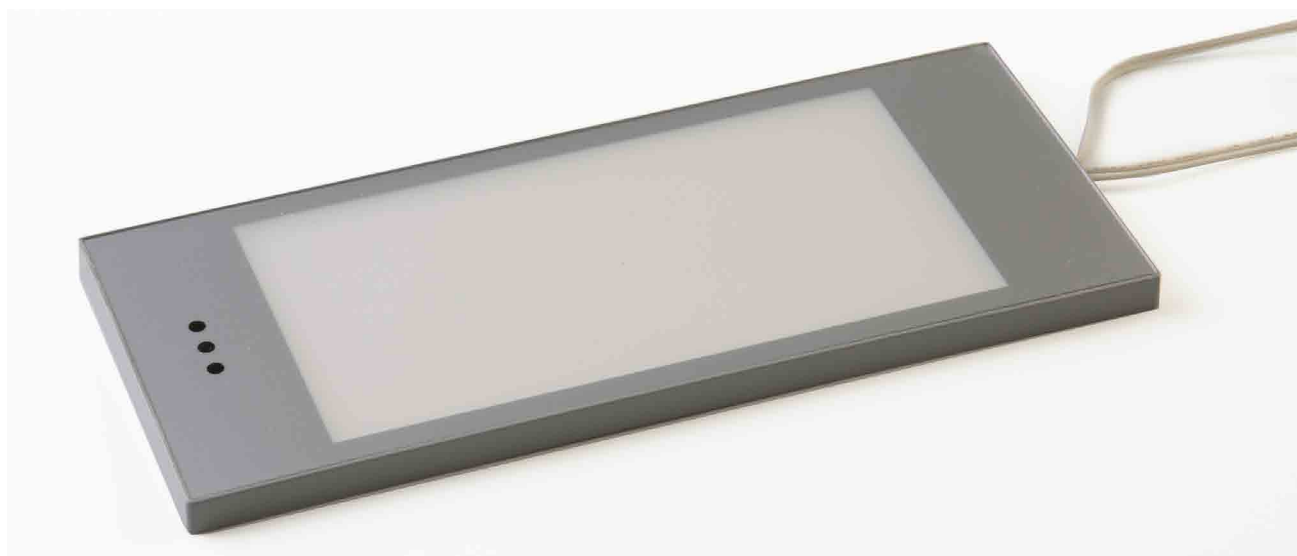
Panel LED with movement sensor integrated.



Coordinated system to illuminate simultaneously all the lights by movement sensor incorporated in spotlight. Main spotlight that lights the other spotlights.

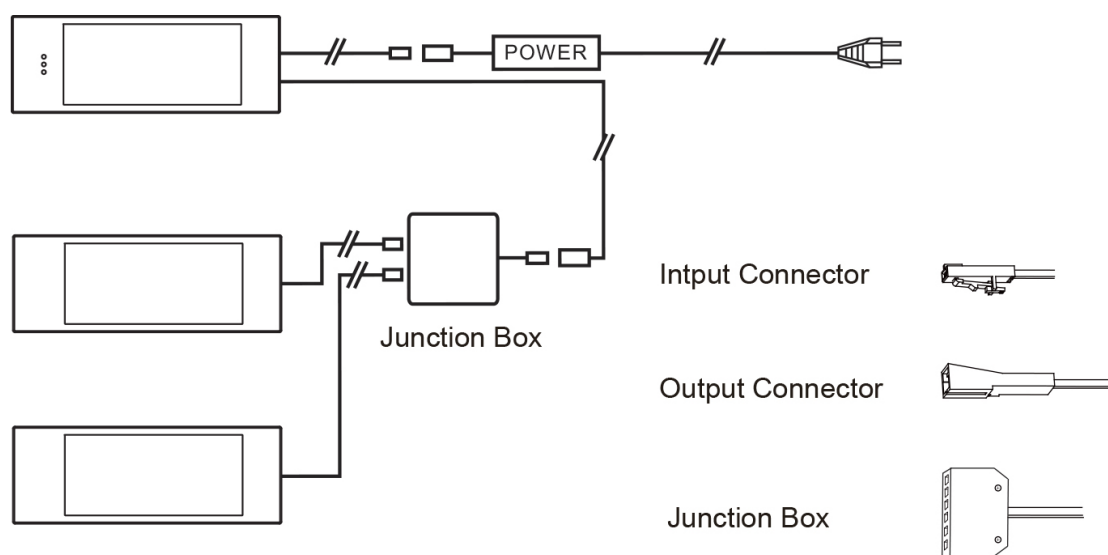
Soft light without dots.

Main spotlight with on/off function and intensity dimmer setting for all other lights.



Reference	Measures	COLOUR	WATT	LUMEN	VOLT	LEDS	Sensor	Min. Space
<b>AZ453-M</b>	180x75x7mm	5000	3.5	95	24	14	Main	250x150x50mm
<b>AZ453</b>	180x75x7mm	5000	3.5	95	24	14	Normal	250x150x50mm

### Drawing



1.5 meters of cable included.  
Possibility to connect various devices.  
Easy installation with adhesives.

# Elegance

LED lamp for bathroom mirror.



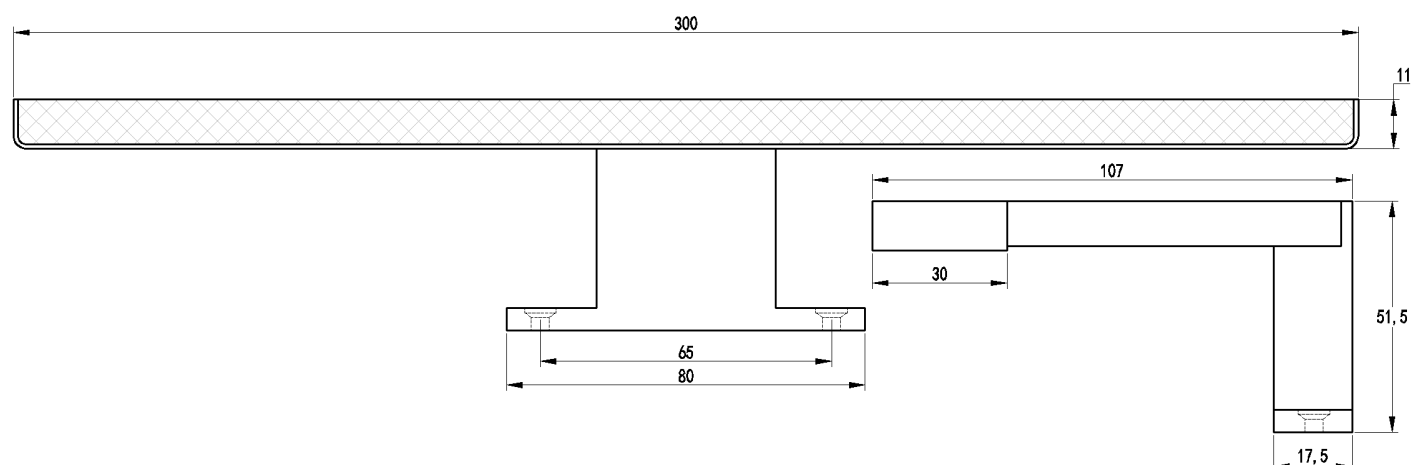
Stainless steel material. High luminous efficacy. IP44 bathroom regulation. Transformer included on spotlight direct connexion to current electricity without transformer.



Reference	Measures	COLOUR	LUMEN	WATT	IP
<b>AZ711-300</b>	300x107x514.5mm	6000	400	5	44
<b>AZ711-400</b>	400x107x514.5mm	6000	550	6,5	44
<b>AZ711-500</b>	500x107x514.5mm	6000	650	8	44

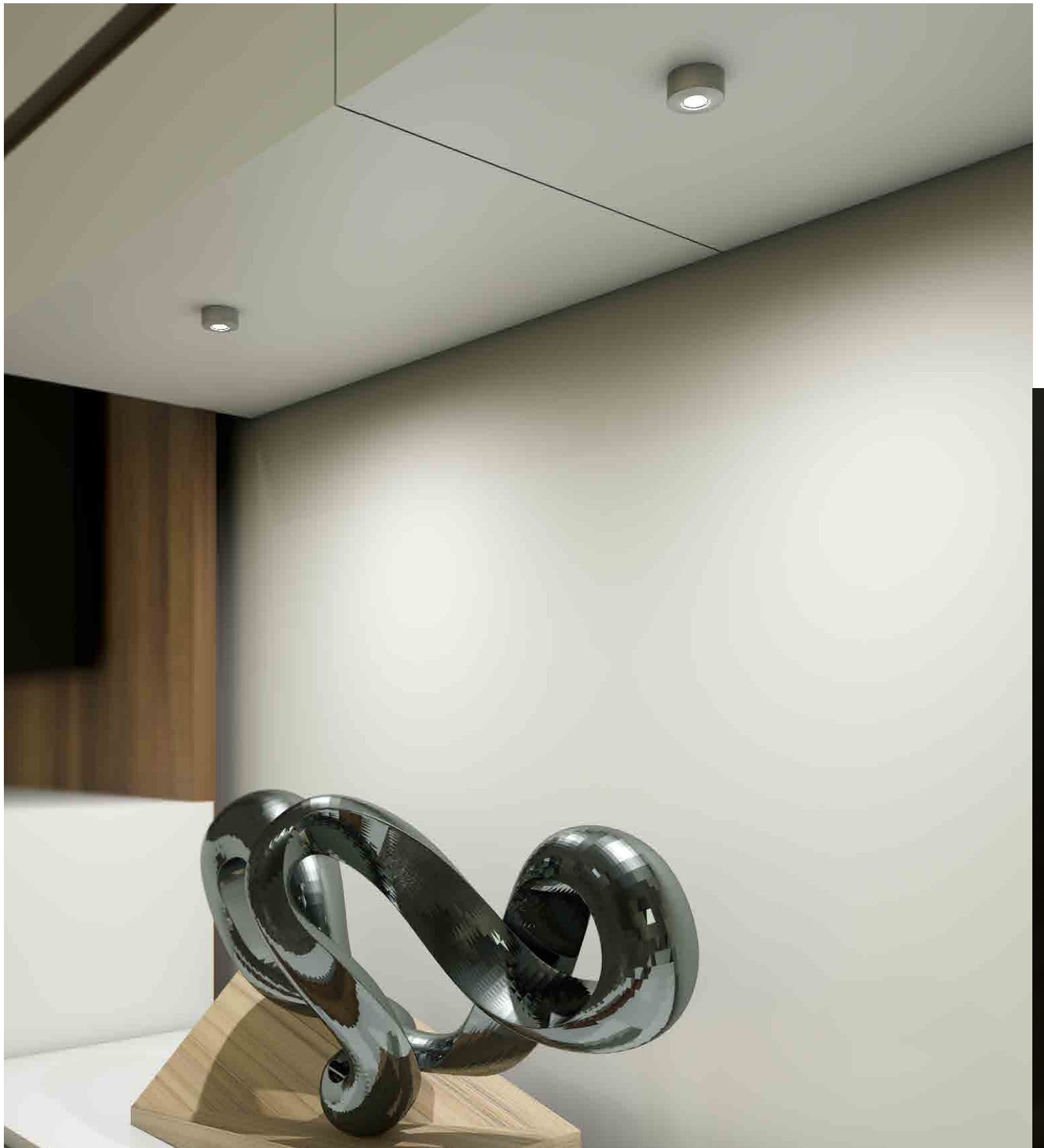
Wall lamp	Reference
	<b>AZ713</b>

### Drawing



# Spot

Spotlight LED surface cabinet illumination. Embed possibility.







Reference	VOLT	WATT	IP	COLOUR	LM
AZ712	12	0.8	44	6000	40

Illumination for small spaces like glass cabinet or gaps on shelves. Embed possibility taking off the ring.



# Anayet

LED USB Reading. 2 USB port.



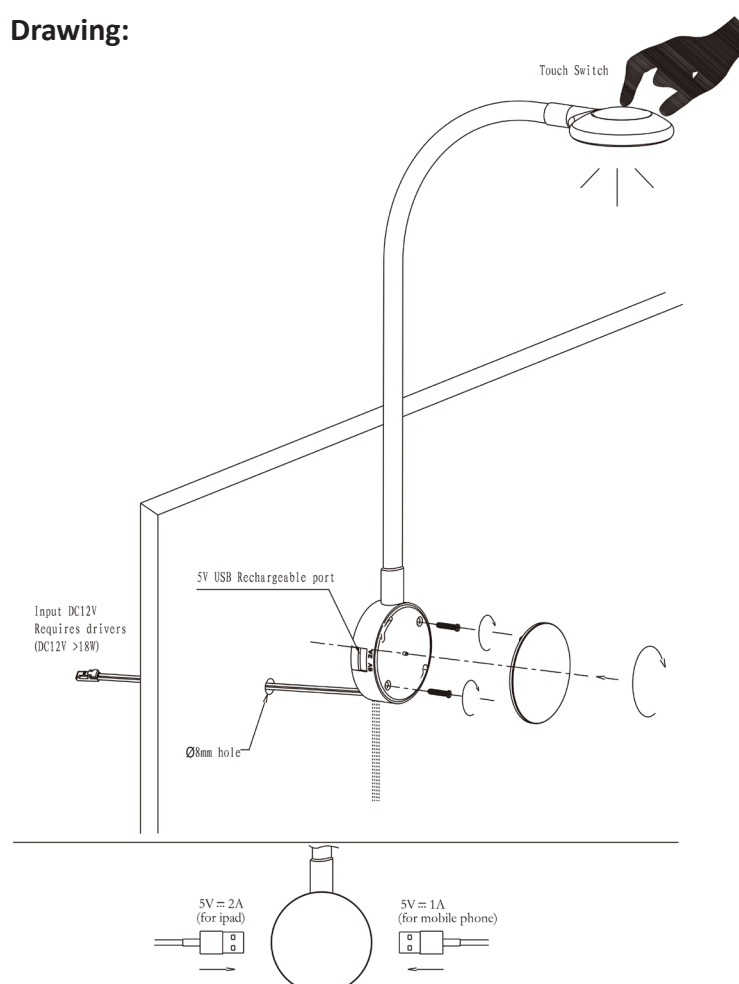
Articulate arm position and recharge. Touch sensor for ON/OFF.



Reference	COLOUR	WATT	LM	VOLT	LEDS
AZ71	6500	2.1	160	12	16

- Material: Metal / PC
- Size: 546mm
- 1.5 meters male connection cable.
- 2 X USB 5V 1A + 2A
- Requires 18W power transformer.

Drawing:



## Switches - Dimmers - Sensors



## AZ750 DOOR LED SENSOR. SURFACE MOUNTING

Infrared switch. When the door or drawer is opened, the light comes on. When the door or drawer closes the light goes out.

### Specifications:

Working voltage	DC12V	DC24V
Maximum load	24W	48W
Quiescent power	6mA	6mA
Working temperature	-20 __ +45°C	-20 __ +45°C
Effective range	<10CM	<10CM



Material: PC.  
Size: 21.2x18x7mm  
1 meter cable from the sensor to the detector.

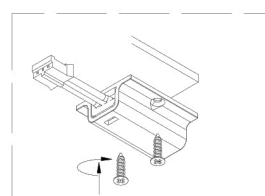
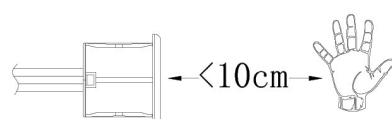
## AZ752 MOVEMENT SENSOR ULTRA SLIM SURFACE MOUNTING

When the hand passes through the area, the light comes on. When the hand passes a second time through the detection area the light will go out.

### Specifications:

Working voltage	DC12V	DC24V
Maximum load	24W	48W
Quiescent power	6mA	6mA
Working temperature	-20 __ +45°C	-20 __ +45°C
Effective range	<10CM	<10CM

### Drawing:





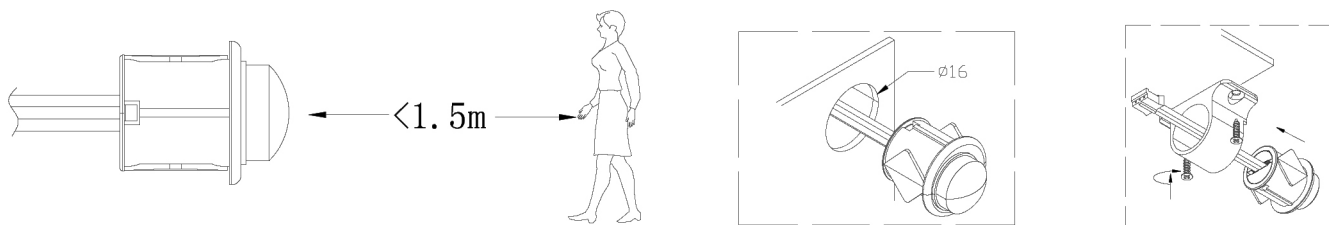
## AZ753 PIR SENSOR SWITCH SURFACE MOUNTING

When the human presence is detected within the Detection Range, the switch is turned on, when the presence leaves the Range for 45 seconds, the switch automatically turns off.

### Specifications:

Working voltage	DC12V	DC24V
Maximum load	24W	48W
Quiescent power	0.6mA	0.6mA
Working temperature	-20 __ +45°C	-20 __ +45°C
Effective range	<1.5M	<1.5M
Detection Angle	110°	110°
Delay Time	45s	45s

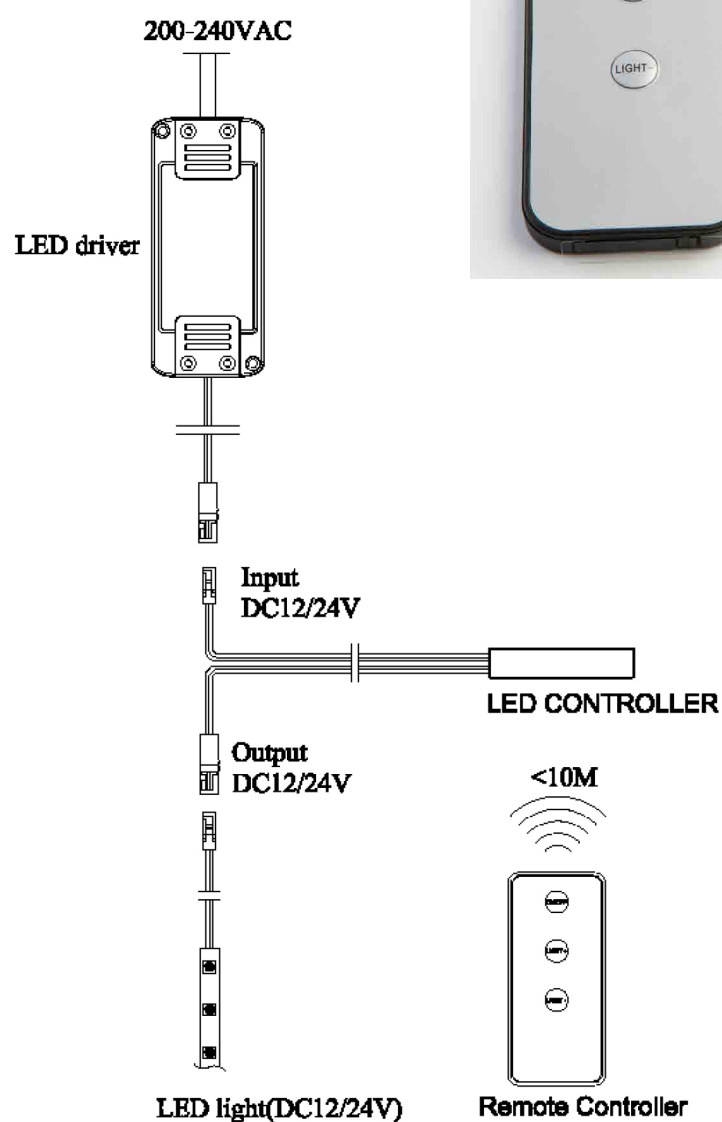
### Drawing:



Material: PC.  
Size: 28x15x17mm  
1 meter cable from sensor to detector.

## AZ757 LED DIMMER REGULATOR LED WITH RADIOFREQUENCY CONTROLLER

Drawing:



Specifications:

Working voltage	DC12V	DC24V
Maximum load	36W	72W
Standby Load	<0.2W	<0.2W
Range control	<10M	<10M

CONTROLLER/ DIMMER:

- Input 1 meter of cable.
- Output 1 meter of cable.

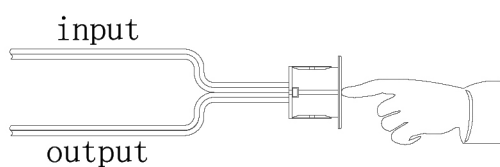
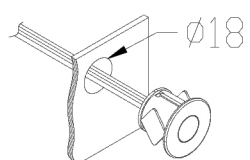
Control with ON / OFF function and increase and reduction of power. It incorporates memory functions.

The controller and remote are paired in default state. One controller could be paired with four remotes max. To pairing newly added remotes, press any button within three seconds when the controller connected with driver and LED lamp with power. The LED light will flicker twice showing the pairing successfully completed.

**AZ754 LED REGULATOR ON/OFF TACTICAL INTENSITY RECESSED MOUNTING**



**Drawing:**



When you touch the button on the bar, and release at 0.5 seconds, the switch will return to the setting state (High-Low-High).

Suitable for bedroom furniture or headboards in bed.



**Specifications:**

Working voltage	DC12V	DC24V
Maximum load	24W	48W
Quiescent power	0.3mA	0.3mA
Working temperature	-20 __ +45°C	-20 __ +45°C
Adjustment Method	Control de Voltaje	<1.5M

Material: PC.  
Size: 22x16mm  
1 meter of cable.

**AZ755 LED REGULATOR TACTICAL INTENSITY DOUBLE CONTACT RECESSED MOUNTING**

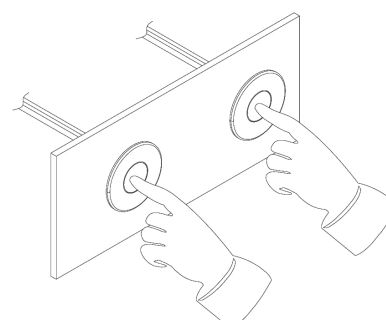
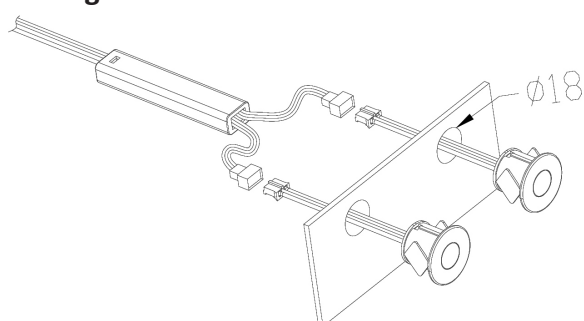
When the human touch ANY of the touch contact, then release within 0.5s, the switch status changes (ON/OFF); When the human touch ANY of the touch contact over 0.5s, the switch will turn to adjustment status (low - high - low).

**Specifications:**

Working voltage	DC12V	DC24V
Maximum load	24W	48W
Quiescent power	<0.05W	<0.05W
Working temperature	-20 __ +45°C	-20 __ +45°C

Material: PC.  
Size: 22xH16mm  
1 meter of interdetector cable and sensor (with interruptor in the middle).

**Drawing:**



**RECESSED SENSOR TWO FUNCTIONS: HAND FUNCTION - DOOR FUNCTION**

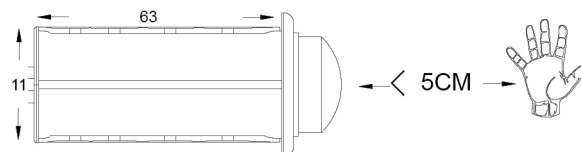




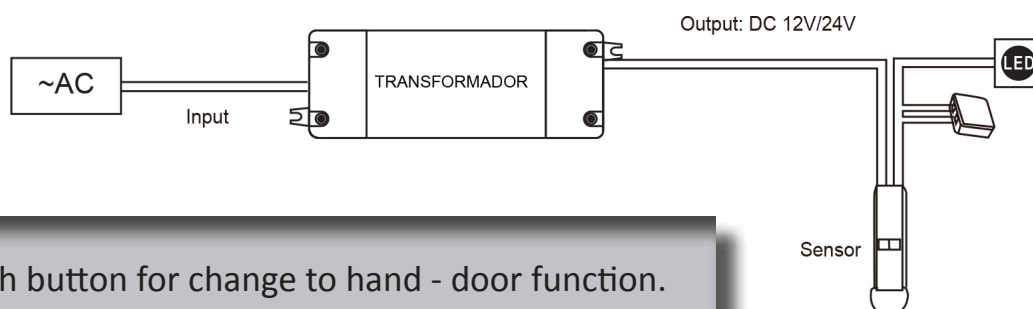
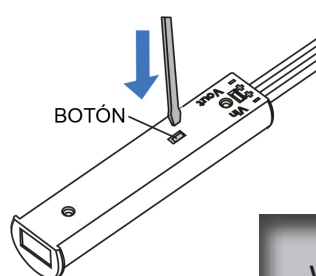
## AZ933 RECESSED SENSOR TWO FUNCTIONS: HAND FUNCTION - DOOR FUNCTION



Measures	Recessed
11.8x63mm	10.8mm



Working voltage	DC12V	DC24V
Maximum load	15W	30W
Working temperature	-20 __ +35°C	-20 __ +35°C
Effective range	<5CM	<5CM

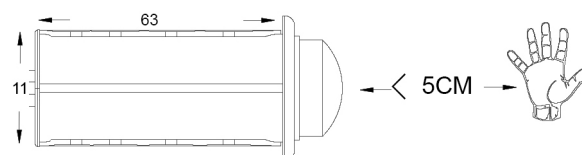


With button for change to hand - door function.

## AZ933-N RECESSED SENSOR HAND FUNCTION



Measures	Recessed
11.8x63mm	10.8mm

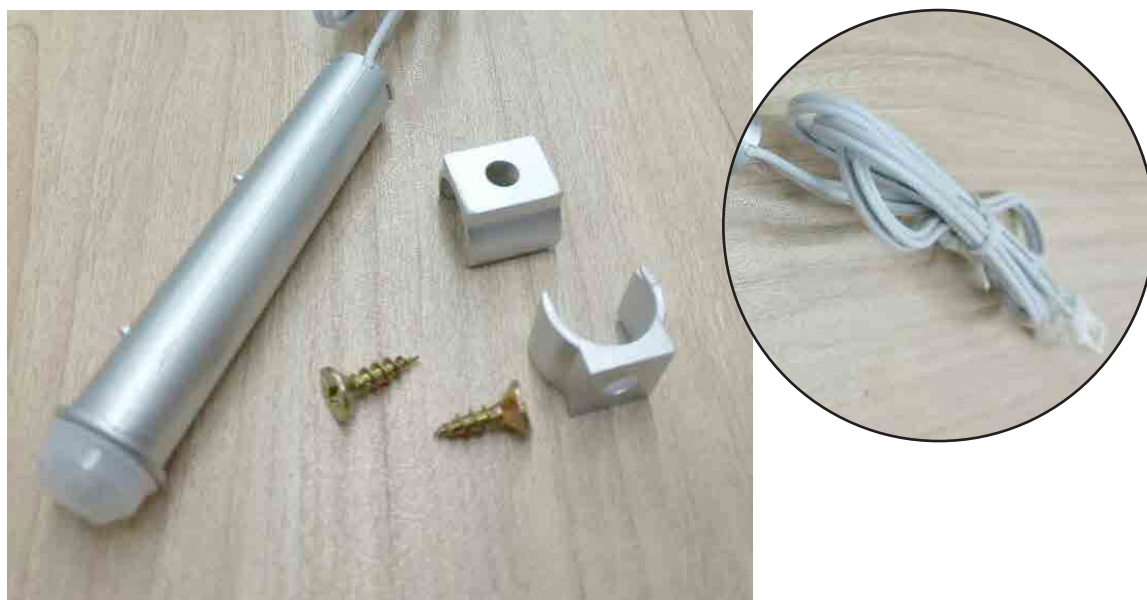


Voltaje	0-36
Maximum load	96-288W
Working temperature	-20 __ +35°C
Effective range	<5CM

DIMMER function for change the light intensity.

**AZ934 RECESSED PRESENCE SENSOR**



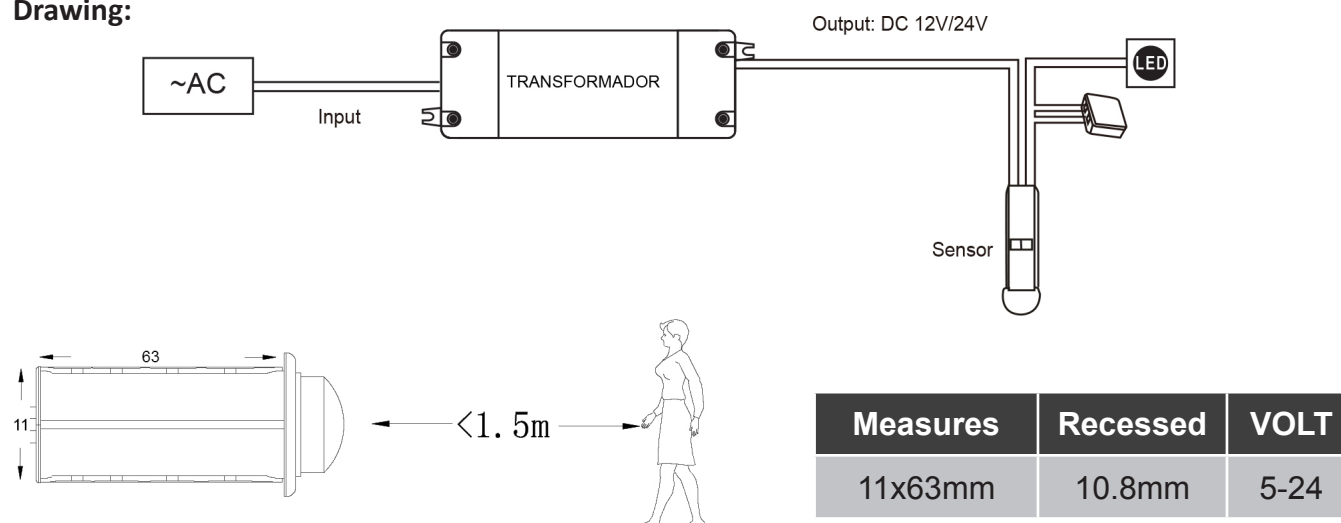


When the human presence is detected within the Detection Range, the switch is turned on. When the presence leaves the Range for 45 seconds, the switch automatically turns off.

**Specifications:**

Working voltage	DC12V	DC24V
Maximum load	24W	48W
Quiescent power	0.6mA	0.6mA
Working temperature	-20 __ +45°C	-20 __ +45°C
Effective range	<1.5M	<1.5M
Detection Angle	110°	110°
Delay Time	45s	45s

**Drawing:**



## Chargers



## DOUBLE USB CHARGER RECESSED



Recessed base with double USB.  
White colour.  
Includes charger and connector cable to the base.

Reference	Measures	VOLT	WATT	HZ	
AZ820	71x26MM	100-240	15	50/60	5V3A

## WIRELESS RECESSED CHARGER FOR SMARTPHONE AND IPHONE



Recessed wireless charger base.  
Ultra-thin pouch for smartphone, two types of connection.  
Includes charger and connector cable to the base.

Reference	Base Measures	Pouch Measures	AC	Plug
AZ821-70B	70mm ext. x 60mm int. x 2mm ext.	69x41MM 700 MA	INP. 100-240V. OUT. 5V -2A	Micro USB
AZ821-90B	90mm ext. x 80mm int. x 2mm ext.	69x41MM 700 MA	INP. 100-240V. OUT. 5V -2A	Micro USB
AZ821-70A	70mm ext. x 60mm int. x 2mm ext.	69x41MM 700 MA	INP. 100-240V. OUT. 5V -2A	Android
AZ821-90I	90mm ext. x 80mm int. x 2mm ext.	69x41MM 700 MA	INP. 100-240V. OUT. 5V -2A	iPhone 6-7

## Balaitus

BAR WITH LED LAMP AND BILED INTENSITY REGULATOR.



LOUDSPEAKERS INTEGRATED. BLUETOOTH CONNECTION. CONNECTION DIRECT WITHOUT TRANSFORMER POWER.

Reference	Large x High x Width	V	W	TRANSF.	K
<b>AZ720</b>	825X52X25.7-20MM	24	21	100-220	3000-6000

- Temperature setting colour from cold to warm.
- Bluetooth connection for audio amplification of devices.
- Integrated controls: volume adjustment, light, programming.



 **Bluetooth™**



**Loudspeakers Integrated**



## LED clip

### CLIP LED FOR CRYSTAL OVAL FINISH CROSS GLASS OF 6 - 8 MM.



Reference	Measures	V	W	COLOUR	LUMEN
<b>AZ330</b>	38X35.5X30MM	12	1.5	6000-6500	60

With cable of 1.5 meters. The transmission of light is up and down. Can be used as a hook.

### CLIP LED FOR CRYSTAL OVAL FINISH CROSS GLASS OF 4- 8 MM.



Reference	Measures	V	W	COLOUR	LUMEN
<b>AZ331</b>	40X30X25MM	12	1.5	6000-6500	60

With cable of 1.5 meters. The transmission of light is up and down. Can be used as a hook.

### CLIP LED FOR CRYSTAL OVAL FINISH CROSS GLASS OF 6 - 10 MM.



Reference	Measures	V	W	COLOUR	LUMEN	LEDS
<b>AZ332</b>	66X15.5X10.4MM	12	0.24	2900-3100/6000-6500	12-18	3

With cable of 1.5 meters.

# Transformers

## Power transformers 12V

Reference	W	V	IP	Measures Large x Width x High
<b>AZ801</b>	6	12	20	98.40X45,60X10.7MM. Box 6 Connections
<b>AZ810</b>	8	12	20	94.5X46X16MM. Box 6 Connections
<b>AZ803</b>	20	12	20	103X35.50X16MM. Box 6 Connections
<b>AZ804</b>	30	12	20	156X50X17MM. Box 6 Connections
<b>AZ805</b>	60	12	20	185X63.5X20MM. Box 6 Connections
<b>AZ806</b>	60	12	20	304.6X30X16.7MM. Box 6 Connections
<b>AZ807</b>	100	12	20	312X27X18.2MM. Box 6 Connections
<b>AZ808</b>	150	12	20	322.6X30.1X21.5MM. Box 6 Connections
<b>AZ809</b>	15	12	44	130X41.5X14.9MM. Box 6 Connections
<b>AZ802</b>	15	12	20	103x35.5x16MM. Box 6 Connections

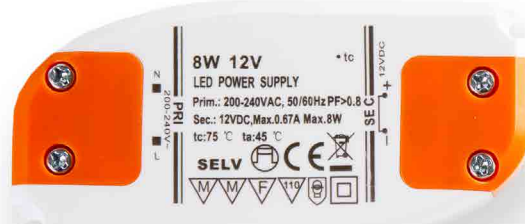
MARCA DO CE  
MARCA DO TUV  
MARCA DO SELV



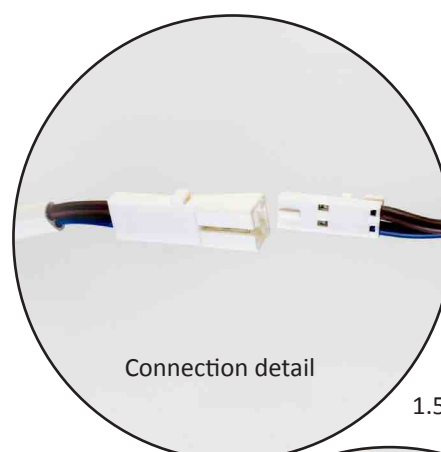
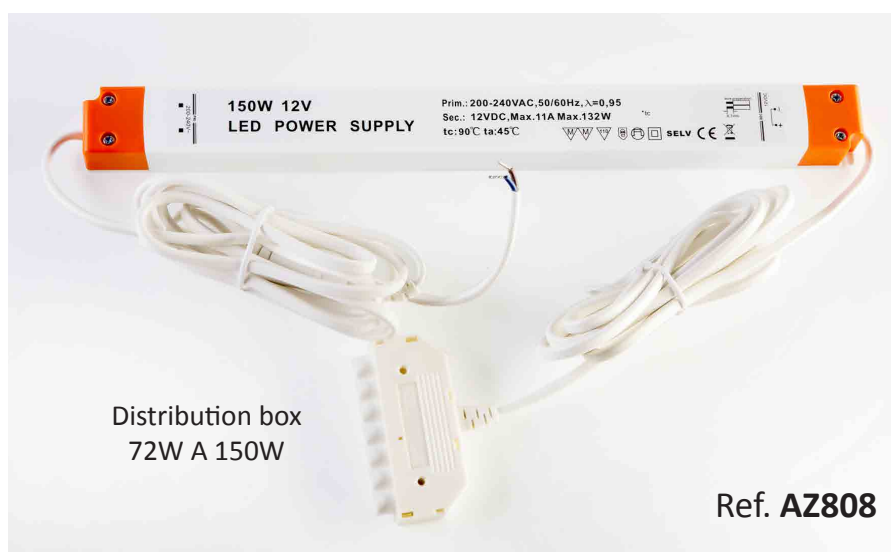
Ref. **AZ809**



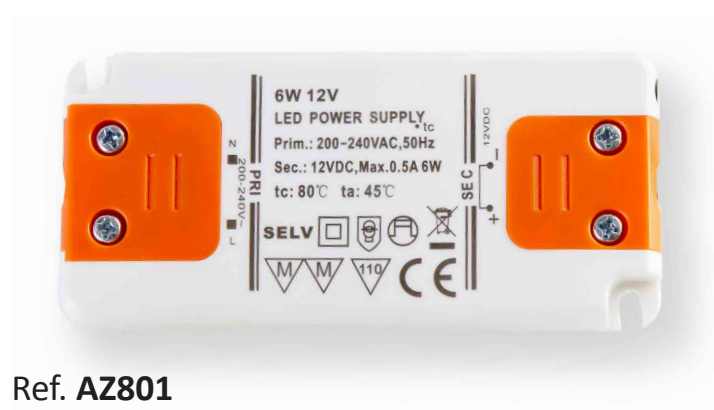
Ref. **AZ804**



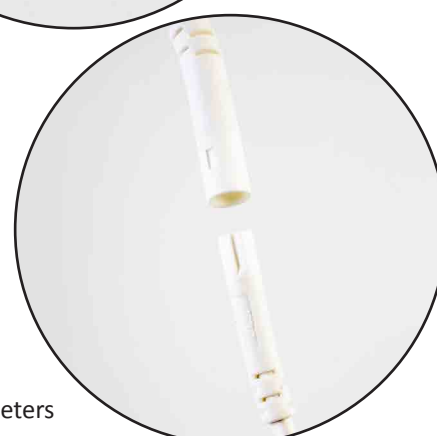
Ref. **AZ810**



1.5 meters

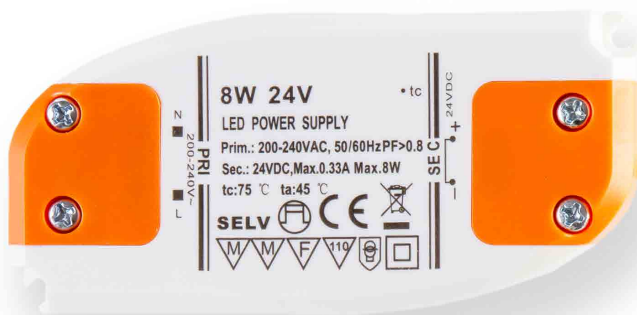


1.5 meters



**Power transformers 24V**

Reference	W	V	IP	Measures Large x Width x High
AZ811	8	24	20	94.5X46.2X19.5MM. Box 6 Connections
AZ812	15	24	20	103X35.5X16MM. Box 6 Connections
AZ813	30	24	20	156X50X17MM. Box 6 Connections
AZ814	60	24	20	185X63.5X22MM. Box 6 Connections
AZ815	100	24	20	312X27X18.2MM. Box 6 Connections
AZ816	150	24	20	322.6X30.1X21.5MM. Box 6 Connections


**Ref. AZ814**

**Ref. AZ811**

**Ref. AZ812**





DEQUM ACCESORIES, SL  
Plaza Segona Germanía, 7  
03830 Muro de Alcoy (Alicante)  
P.O. BOX 99  
Tel: +34962389195 / Fax: +34962389196  
WEBSITE: [www.dequm.com](http://www.dequm.com)  
MAIL: [export@dequm.es](mailto:export@dequm.es)